

We enlarge your point of failure!

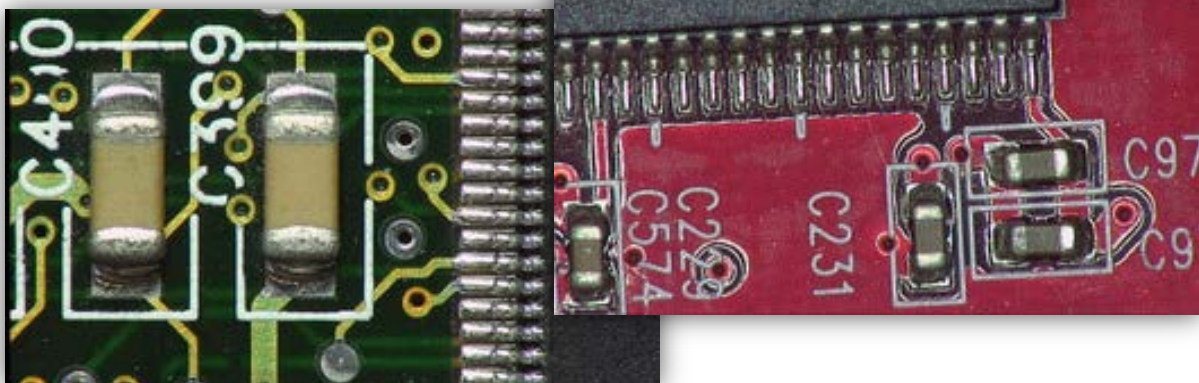
HD-Inspektor II

4 JENA
ENGINEERING



High Definition digital zoom microscope

- quality control
- electronics and PCB inspection
- inspection and repair of micro-mechanics and -assembly
- medical and biological investigation
- education and in-job training



Innovative, high competitive device for inspection, rework and repair with intelligent HD-camera with 30x optical zoom of exceptional image quality and resolution. The inspection times are strongly shortened by the super-quick auto-focus-system compared with other HD-systems.



Your advantages:

- control of camera, zoom, autofocus/manual focus and lighting with a robust, clearly structured external control device with joystick
- back-friendly ergonomical work free of tiredness
- discussion of the live pictures in the team
- large working distance / impressive field of view allow work under the inspection system
- different stands in aluminum, steel or for table mounting available
- flexible customization and localization possible



The HD-Inspektor II optionally can be combined with our inspection tables IT-and VT series which simplify in the high enlargement area by sensitive positioning. Ball tables of different diameter permit an uncomplicated sloping inspection. The Image-quality of the HD-Inspektor in combination with a PC with frame-grabber gives the user the possibility to store impressive live- pictures in full HD resolution, to mark details or to mark interesting areas.

The creation of own image-databases in our software JE.Doku is possible too.

- **Options:** articulated boom, Laser-Pointer, PC-System with HD-framegrabber and software, wall mounting for control unit and monitor

Technical data:	
Camera	Full-HD 1080 (1920 x 1080 pixels) by SONY-Exmor™ sensor
Video interface	HDMI
Optical system	motorized zoom (30x optically), quick autofocus, automatic shutter
Visualisation	22" TFT monitor Full-HD 1920 x 1080 pixels ,16:9
Magnification	approx. 2... 73x (standard) (by 22" Monitor) approx. 3... 95x (objective +5.0 dpt.) (by 22" monitor)
Field of view	approx. 6.5 x 3,6 to 220 x 124 mm (standard) approx. 5.0 x 2.8 to 140 x 79 mm (objective +5.0 dpt)
Lighting	ring light and sloping light with Power-LED, separate dimmable
Working distance	approx. 300 mm (standard) approx. 190 mm (by objective +5.0 dpt)
Power supply	230 V / 50 Hz in, 24 Vdc 24 W out
Mass	about 5 kg without monitor (depends on boom and stand)

For more information, please contact the optical inspection branch of our company or visit our website.